

MONTHLY MEMBERSHIP PROGRESS REPORT

District 322C1

Results as of: 5/31/2024

GMT:

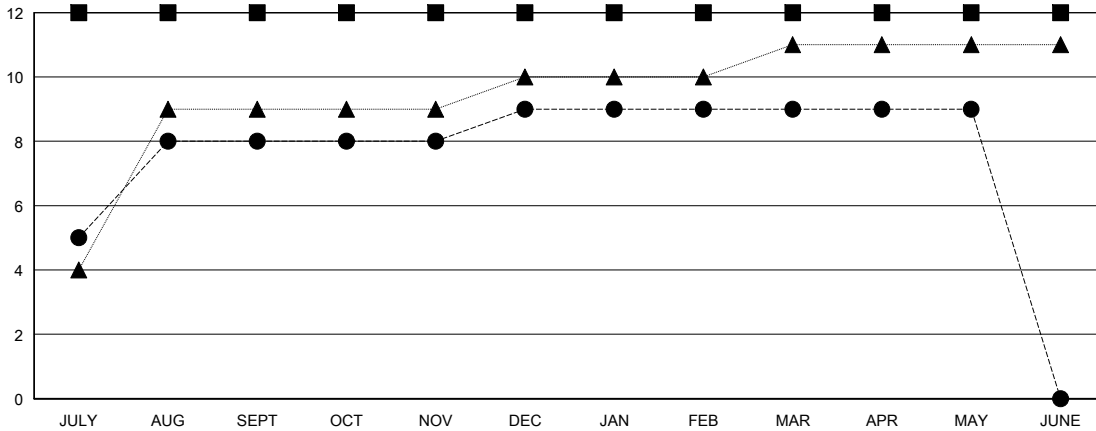
LOCATION INDIA

GMT CA

Clubs			
RESULTS FOR 2023-2024			
QUARTER	NEW CLUB GOAL	NEW CLUBS	DROPPED CLUBS
JULY/AUG/SEPT	12	8	0
OCT/NOV/DEC	0	1	2
JAN/FEB/MAR	0	0	3
APR/MAY/JUNE	0	0	1

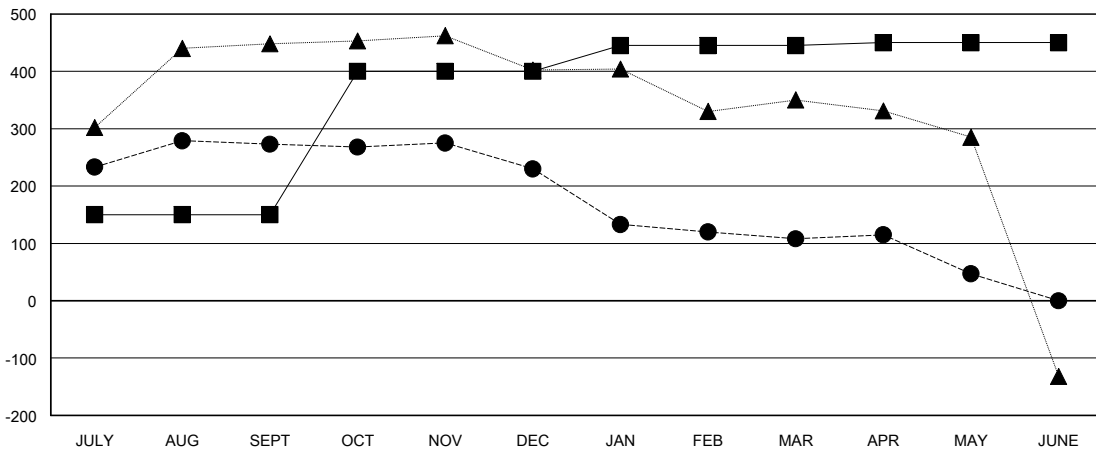
Members			
RESULTS FOR 2023-2024			
QUARTER	MEMBER GROWTH NET GOAL	MEMBER GROWTH ACTUAL	DROPPED MEMBERS ACTUAL (including transfers)
JULY/AUG/SEPT	150	422	131
OCT/NOV/DEC	250	99	129
JAN/FEB/MAR	45	52	155
APR/MAY/JUNE	5	81	95

GOALS AND ACTUAL NEW CLUBS CUMULATIVE



- - CURRENT YEAR GOALS FOR NEW CLUBS
- - CURRENT YEAR ACTUAL NEW CLUBS
- ▲ - LAST YEAR ACTUAL NEW CLUBS

GOALS AND ACTUAL MEMBERS CUMULATIVE



- - MEMBER GROWTH NET GOAL
- - MEMBER GROWTH ACTUAL
- ▲ - LAST YEAR MEMBERSHIP ACTUAL

DROPPED CLUBS: 6	
DROPPED MEMBERS	
DECEASED	14
CLUB CANCELLED	142
OTHER	353
TOTAL	509

75 CLUBS OF 116 ADDED 1 OR MORE NEW MEMBERS

GENDER DISTRIBUTION	
MALE	2,590 (75.44%)
FEMALE	843 (24.56%)

[CLICK HERE FOR CUMULATIVE MEMBERSHIP DATA](#)

TOTAL FAMILY UNIT MEMBERS	1,730
FAMILY MEMBERS PAYING HALF DUES	1,016